

Kolling Science Fair

The Kolling Elementary School Science Fair will be held on Thursday, April 6th, 2017. The Fair is open to all Kolling Students in Kindergarten through 4th grade. Students should bring their projects to school on the morning of the fair. The projects will be set up in the gym by 9:00 a.m. for classes to view during the day, with a chance for parents to visit the fair from 6:30-7:30 p.m. Participants can take their projects home after the evening session of the fair.

Entry forms must be returned by March 22, 2017.

Kindergarten students

Kindergarten students may bring a collection, a scientific display, or conduct an experiment. For a collection, the student can collect and study objects related to a scientific topic such as insects, leaves, rocks, shell, etc. The collection should belong to the student, be labeled, and should encourage students to learn something new! A report or display board should accompany the collection.

Grades 1st through 4th

1st through 4th grade students may bring a scientific display or conduct an experiment.

Report and Scientific Display: This type of project involves researching a subject and putting a display together based on what the student has learned. Examples: What causes erosion? What is the average temperature in December? At what rate does a pet drink water?

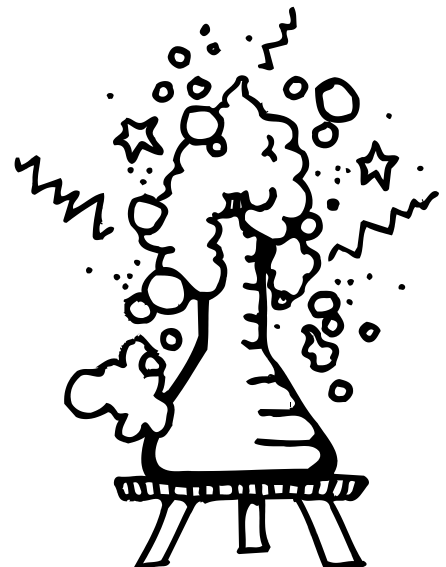
Experiment: This type of project involves deciding upon a question and using the scientific method to formulate an experiment to prove or disprove the hypothesis. A report, a log and a display board are generally part of the display. Examples: Do roots always grow down? What color container stays coolest? **Projects for the Lake Central Fair must be an experiment using the scientific method.**

Fourth grade students are encouraged to enter their projects in the participating in the Lake Central Science Fair, being held on April 8, 2017.

Hints for Getting Started

- Select an area of Science that interests you
- Research your subject and collect information
- Plan your project and list the materials you will need
- Set up a time schedule for working on and completing your project
- Set up and carry out your project or experiment
- Observe and record findings
- Make sure that you have a conclusion

I look forward to a successful science fair and can't wait to see you there!



Guidelines for the Fair Display

- Three-panel display boards are the best way to make your display. Poster board can be mounted to pegboard or paneling.
- Do not use poster board or cardboard as sole supports. Your project will "flop over".
- The exhibit must be self-supporting. Exhibit material cannot be fastened to the walls.

Items NOT ALLOWED at the display:

- Living organisms, including plants
- Human or animal food
- Any liquids, household laboratory chemicals including water
- Any containers with liquid
- Organisms, fungi, mold, cultured growths, spoiled food
- Soil, and, or waste samples
- Preserved vertebrate or invertebrate animals
- Human or animal parts (for example: blood, urine)
- Poisons, drugs, controlled substances, hazardous substances and devices
- Dry ice or other sublimating solids
- Sharp items (syringes, needles, pipettes, knives)
- Flames or highly flammable materials
- Batteries with open-top cells
- Chemicals
- Projects with moving parts that have unprotected belts, pulleys, chains, or pinch points unless for display only and are not operated
- Operating high voltage electricity projects
- Glass on display
- Pressurized tanks

Helpful Websites:

Here are some websites that may be helpful in creating your science project. This list is only a few of the websites available. Be sure to ask your parents before using the Internet.

sciencebuddies.org

cool-science-projects.com

scifair.org

stevespanglerscience.com

elmers.com/science fair

Kolling Elementary Science Display
Student Entry Form
DUE NO LATER THAN March 22, 2017.

Student Name _____

Grade _____ Teacher _____

Project Title _____

Project Description _____

Project Resources _____

**Live animals, food, plants, bone, tissue, and chemicals are not allowed at the show. You
can take lots of pictures, and use them for your display.**

Will there be a need for an electrical outlet? _____ Yes _____ NO

Students must provide their own extension cord.

Parent/Guardian Signature of Approval _____

This sheet must be returned NO later than March 22, 2017.