



Indiana
Department
of
Health

2021 FALL SCHOOL WEBINAR

PAM PONTONES

DEPUTY STATE HEALTH COMMISSIONER
AND STATE EPIDEMIOLOGIST

LORRIE RAMSEY, MS, BSN, RN, NE-BCI

CHIEF NURSE CONSULTANT

LEAH RAIDER

CONTACT TRACING PROGRAM MANAGER

09/09/2021

Updated Quarantine Guidance for K-12

- In indoor IN-SCHOOL settings and on the bus where EVERYONE is wearing a face covering
 - People who are contact traced DO NOT have to quarantine
 - Instead, people who are contact traced (because within 3 feet while masked) should be notified to monitor for symptoms and avoid high risk people
 - If an adult, may notify directly, or if a child is contact traced, then his/her guardians should be notified
- This DOES NOT apply to situations where either the positive case OR the close contact is unmasked
- If anyone in the classroom is unmasked or wearing an alternative face covering (face shield), all surrounding the positive individual quarantine. (Contact trace to 6 feet).
- This DOES NOT apply to situations that take place outside of the IN-SCHOOL setting (example: extracurricular activities)
- A reminder:
 - Exposures in outdoor settings during the school day (playground, outdoor class, outdoor lunch) do not need to be contact traced OR quarantine (more later in presentation)
 - Fully vaccinated individuals do not need quarantine (more later in presentation)

Scenario: Enforced Mask Requirement

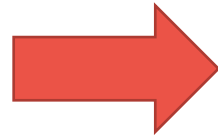
- Kindergarten class where there is frequent interaction of fewer than 3 feet between all 22 students and teachers
- During in-class instruction everyone, including students, teacher, and teacher-aide, consistently wear their mask
- Only remove masks during
 - Lunch where the students have documented assigned seats
 - Outdoor recess
 - Indoor physical education where students are kept greater than 6 feet apart

Scenario: Enforced Mask Requirement

- One COVID-19 positive student:
 - Only people who have to quarantine are the 3 students who sit within 6 feet of the positive student at the INDOOR lunch where they are all unmasked
 - Since all students and teacher are within 3 feet of the positive student at any given time during the day, the rest of the class and the teacher are notified they are a close contact and asked to monitor for symptoms and avoid contact with high-risk people BUT they DO NOT have to QUARANTINE
 - If any of these identified close contacts develop symptoms, they should stay home and get tested

It is simple...

When EVERYONE
is MASKED in the
classroom
environment



NO ONE must
quarantine if a
positive case is
identified

It is simple

When
someone/anyone
is UNMASKED



Close contacts
(anyone within 6
feet for greater
than 15 minutes)
MUST quarantine*

(both masked and unmasked within 6 feet)

What does this mean for contact tracing?

When EVERYONE is masked:

- Continue to contact trace people who are within 3 feet of the positive case for >15 minutes
- People and/or the child's guardian(s) should be notified that he/she is a close contact
 - Close contacts in this **case can continue to attend school**
 - Should monitor daily for symptoms (14 days but should be doing it anyway)
 - Should wear a mask in all high-risk situations (in and out of school)
 - Should avoid people who are high risk of COVID-19 infection
 - Immunocompromised
 - Pregnant women
 - Age greater than 65

When ANYONE is NOT masked:

- Continue to contact trace people who are within 6 feet of the positive case for > 15 minutes
- People and/or the child's guardian(s) should be notified that he/she is a close contact
 - Close contacts in this case **MUST** quarantine* per one of the following acceptable time frames
 1. Quarantine for 14 days (no test needed)
 2. Quarantine for 10 days (no test needed)
 3. Quarantine for 7 days and must get a negative test on day 5, 6 or 7
 - Monitor for daily for symptoms and get tested right away if develops symptoms
 - Wear a mask in all situation if quarantine less than 14 days (enhanced precautions)



* Fully vaccinated individuals DO NOT need to quarantine

Guidance for Testing and Quarantine Options

- Close contacts who are unvaccinated **MUST** follow one of these three quarantine options as directed by the school/school district.
 - Asymptomatic close contact may return after Day 10 with enhanced precautions in place Days 11-14
 - Asymptomatic close contact may return on Day 8 with negative PCR or Antigen test obtained on day 5, 6, or 7 by a testing facility or negative BinaxNOW (if performed in your school) on Day 8. Continue enhanced precautions Days 8-14
 - Asymptomatic close contact return on Day 15. May return to all prior activities without enhanced precautions or testing
- All fully vaccinated individuals who remain asymptomatic (even if a close contact) do not need to quarantine but should monitor for symptoms throughout the 14 days following their exposure and are encouraged to get tested 3-5 days after exposure.

Does this change anything for fully vaccinated individuals?

- NO
- Fully vaccinated individuals continue to not need to quarantine when exposed BUT
 - Should monitor for symptoms daily for 14 days
 - Wear a mask for 14 days after the exposure
 - Should test 3-5 days after the exposure
 - Should avoid at risk individuals in the 14 days after the exposure

Does this change anything for outdoor activities?

- NO
 - For school day activities, it is not necessary to contact trace in situations where the students, teachers and staff are outside
 - Consider maintaining your pods and seating charts in case of an exposure in a high risk situation.

Does this change anything for extra-curricular activities?

- No
 - This only applies to in-school indoor settings
 - Extra-curricular activities should be contact traced as described by the CDC
 - Indoors
 - Those within 6 feet of a positive individual should quarantine (with or without a mask on)
 - Outdoors
 - Cohort students together and keep pods of students together
 - Exercise spacing as much as possible
 - Educate that symptomatic individuals should NOT attend extra-curricular activities and should stay home and obtain a COVID-19 test

What about indoor in-school activities where students have to take off their masks?

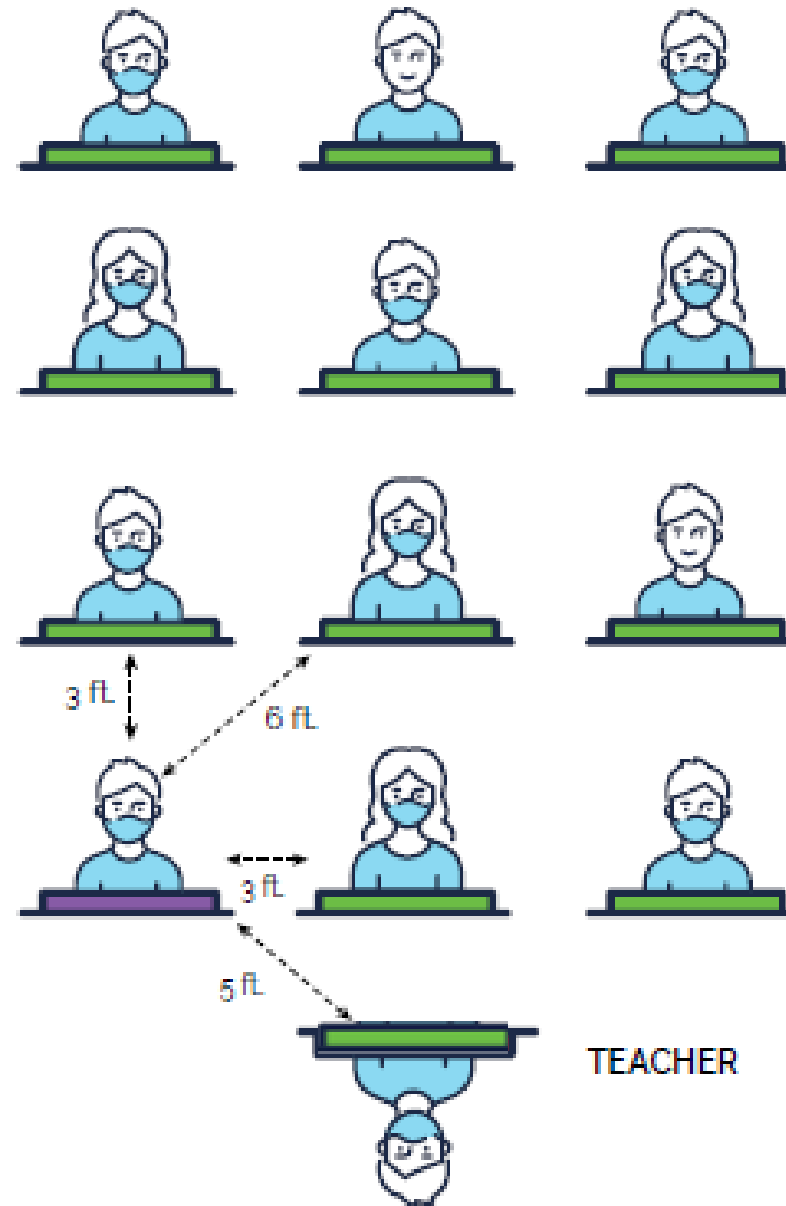
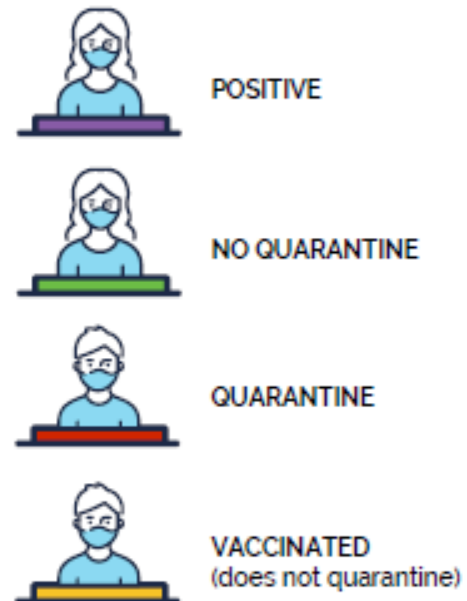
- Examples (lunch, choir, band)
- In these cases (where there are no masks) anyone within 6 feet for > 15 minutes will have to be appropriately contact traced and quarantine*
- We continue to recommend maximizing space so fewer people meet that criteria
- We continue to recommend assigned seating in these scenarios so that students can be easily contact traced

How will this affect you?

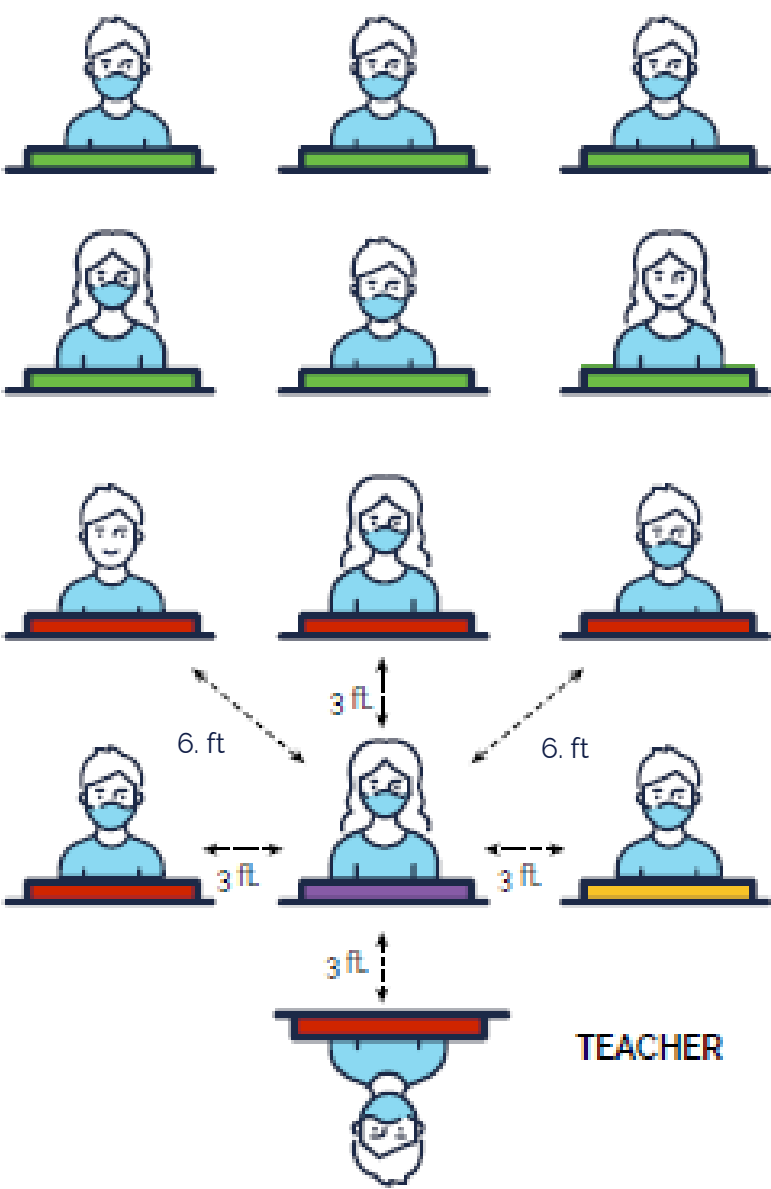
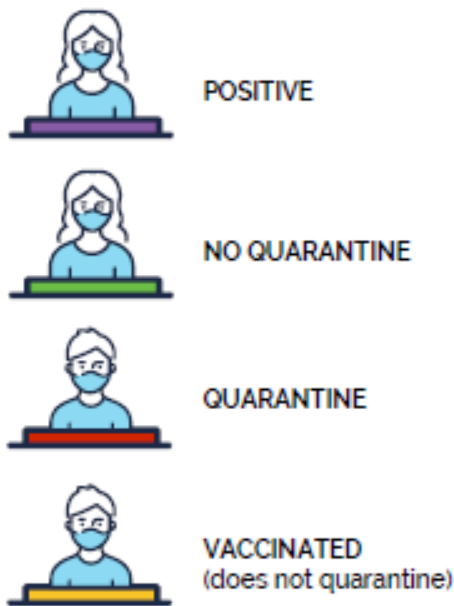
Fewer students missing in-person learning

- Go back to scenario 1 where there was a positive kindergartener
- If the classroom is **mask optional** and close contact not masked or case not masked, then the **ENTIRE class of 22 students would need to be quarantined** (ineligible for vaccine due to age, and intermixing <3 feet throughout the day)
- With this updated guidance, and a **mask requirement in place**, **only 3 students** who were within 6 feet at lunch will need to quarantine

Classroom 1



Classroom 2



BinaxNOW Testing Resources for school-based testing

- All the information you need to administer BinaxNOW rapid antigen tests onsite is linked here.
 - [Instructions for Schools](#)
 - [K-12 BinaxNOW Quick Start Guide](#)
 - [Certificate of Training](#)
 - [Acknowledgment of Responsibilities](#)
 - [BinaxNOW Antigen COVID Testing Training Quiz and Key](#)
 - [BinaxNOW Antigen COVID Testing Log](#)
 - [BinaxNOW Antigen COVID Testing Patient Report Template](#)
 - [K-12 BinaxNOW FAQs](#)
 - [Reorder instructions](#)
- Please use the [Langham portal](#) for ordering any needed personal protection equipment (PPE), including KN95 masks, face masks for children and adults, hand sanitizer and small quantities of PPE needed for testing personnel (face shields, disposable gowns, gloves).
- If you are a first-time user, you will need to click "Register" and fill out the required information to be granted access. The registration key is ISDH21
- Email your questions and completed testing information to - binaxnowtestsupport@isdh.in.gov

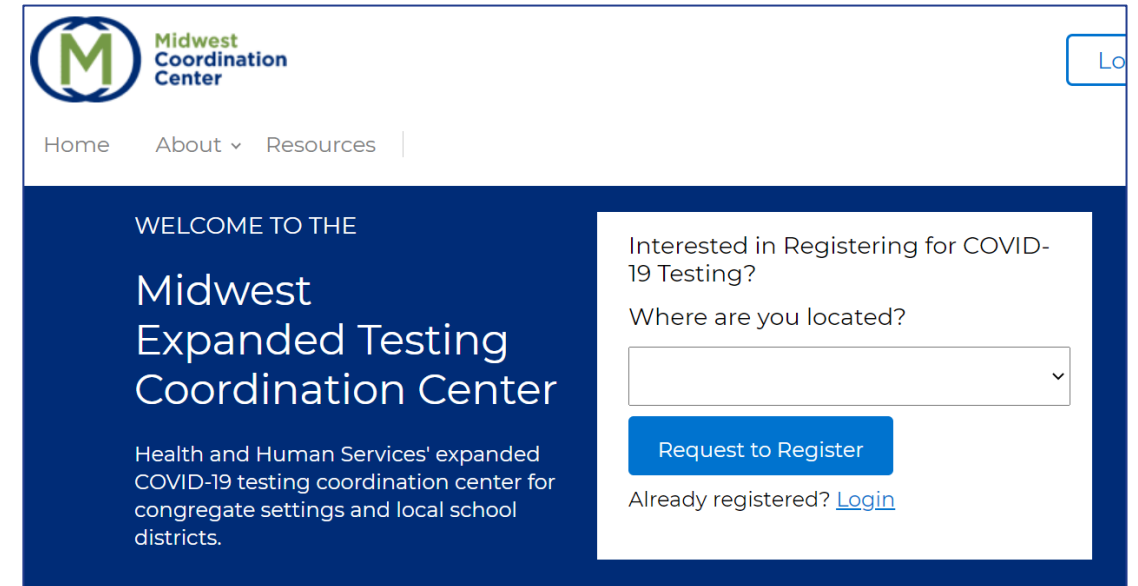
Report BinaxNOW results

- All tests must be reported in the School Portal
- and a copy of the results provided to the patient (>18 years) or parent/guardian (< 18 years) within 24 hours of testing.
- To report a new test result from the School Portal homepage select one of the following options:
 - 1) Add Test Result (Manually enter a single test result)
 - 2) Upload Excel (Upload multiple test results using the 'Test Result Import Template')

If you are interested in PCR screening

Midwest Coordination Center

- May also hear it referred to as Operation ET or Battelle
- Free program for K-12 and other congregate settings
- Fully funded by HHS at least through November 2021
- Battelle is petitioning HHS to expand scope and duration
- Pooled PCR screening testing
- Schools can register directly via <https://testedandprotected.org/#/>



The screenshot shows the homepage of the Midwest Expanded Testing Coordination Center. The header includes the logo (a green 'M' in a circle) and the text 'Midwest Coordination Center'. Navigation links for 'Home', 'About', and 'Resources' are present. The main content area has a dark blue background with white text. It says 'WELCOME TO THE Midwest Expanded Testing Coordination Center' and describes it as 'Health and Human Services' expanded COVID-19 testing coordination center for congregate settings and local school districts.' On the right, there is a white box with the text 'Interested in Registering for COVID-19 Testing?' and 'Where are you located?' followed by a dropdown menu. Below this is a blue button labeled 'Request to Register' and a link for 'Already registered? Login'.

Mask Guidance

Characteristics of a well-fitting mask include

- Should fit snugly around the nose and chin with no large gaps around the sides of face
- Should be made with two to three layers
- Should be made of breathable, tightly woven cloth such as cotton
- Masks with inner filter pockets are fine and could provide an additional layer of protection if a liner is inserted

Don't use

- Masks that don't fit properly
- Masks made from materials such as mesh, plastic or leather, scarfs or ski masks (use caution with gaiters)
- Masks made from loosely woven fabrics, knits or those with one layer
- Masks with exhalation valves or vents

Mask Special Considerations

CDC does not recommend face shields or goggles as a substitute for masks, except in special circumstances that may require a face shield be worn.

Examples include:

- Interacting with young children who are learning to read
- Those learning a language when they need to see someone enunciate
- Those who are deaf or hearing impaired may find a face shield better than a mask when communicating

If you must wear a face shield instead of a mask:

- Chose one that wraps around the sides of your face and extends below your chin and covers your nose completely (full face shields)
- If using only face shields as protection, you will contact trace at 6 feet in the **classroom**.



Special Considerations

Gaiters & face shields



Wear a gaiter with two layers, or fold it to make two layers



Not recommended: Evaluation of face shields is ongoing, but effectiveness is unknown at this time.

Children



Find a mask that is made for children to help ensure proper fit



Check to be sure the mask fits snugly over the nose and mouth and under the chin and that there are no gaps around the sides



Do NOT put on children younger than 2 years old



Indiana
Department
of
Health

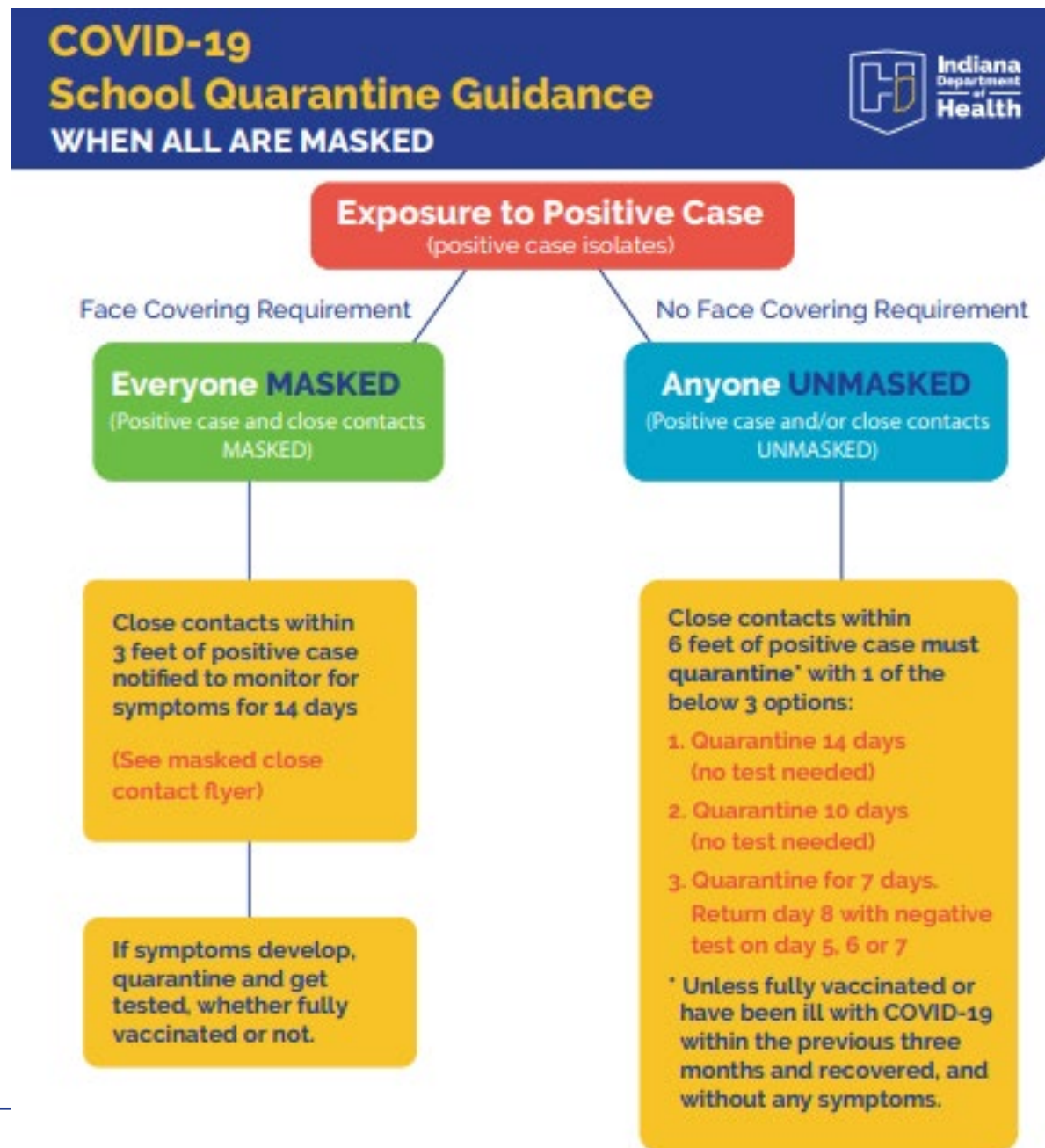
<https://www.cdc.gov/coronavirus/2019-ncov/prevent-getting-sick/about-face-coverings.html>

New Guidance Documents

School Quarantine Guidance

Applies to the classroom setting only when all are masked:

https://www.coronavirus.in.gov/files/21_Decision%20Tree_School%20Quarantine_9-3.pdf



New Guidance Documents

Wear a mask.
Stay in school.

Applies to the classroom setting only:

https://www.coronavirus.in.gov/files/21_WearAMaskStayInSchool_9-7.pdf

Wear a mask. Stay in school.

COVID-19 School Scenarios

The option to not quarantine does not apply outside the classroom setting, including lunch, band, choir or extra-curricular activities.

MASK REQUIREMENT

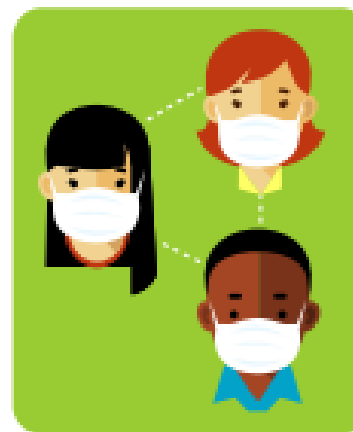
When a masked person tests positive and close contacts are wearing masks

COVID +

Close Contacts



ISOLATE



NO QUARANTINE
EVERYONE WITHIN 3 FEET
SELF-MONITOR

NO MASK REQUIREMENT

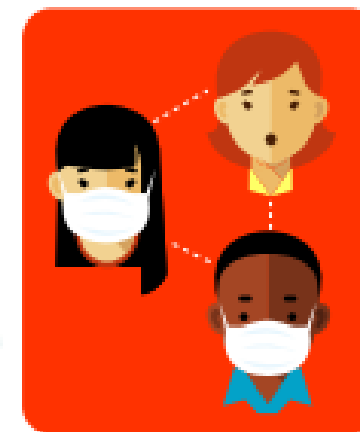
When positive person and/or close contacts are not wearing masks

COVID +

Close Contacts



ISOLATE



QUARANTINE
(ALL WITHIN 6 FT. UNLESS FULLY
VACCINATED AND ASYMPTOMATIC)

New Guidance Documents

Updated Control Measures:

<https://www.coronavirus.in.gov/files/COVID-19%20Control%20Measures%20under%20410%20IAC%2019.7.21.pdf>

COVID-19 Control Measures

Legal Authority: IC 16-41-2-1

Statutes Affected: IC 16-41-2

The specific control measures for COVID-19 (infectious agent: SARS-CoV-2) are:

(1) Every laboratory confirmed case of COVID-19 shall be reported to the Department of Health within twenty-four (24) hours.

(2) For confirmed cases of COVID-19, an investigation should be conducted to determine:

- A. Immunization history.
- B. COVID-19 disease history.
- C. A history of underlying chronic or immunosuppressing conditions.
- D. Disease severity and hospitalization.



Epidemiology Update:

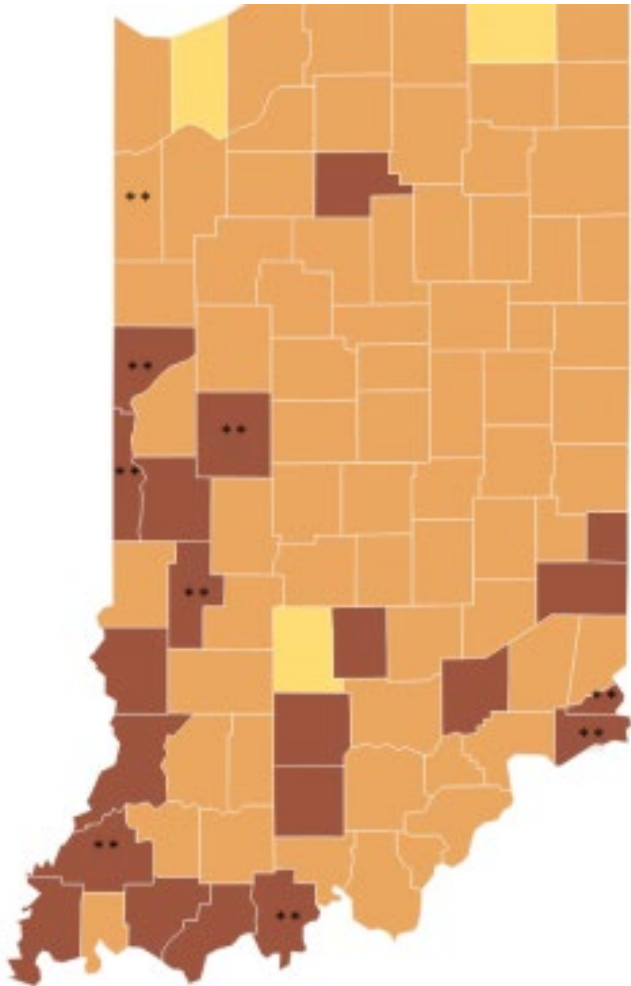
Pam Pontones



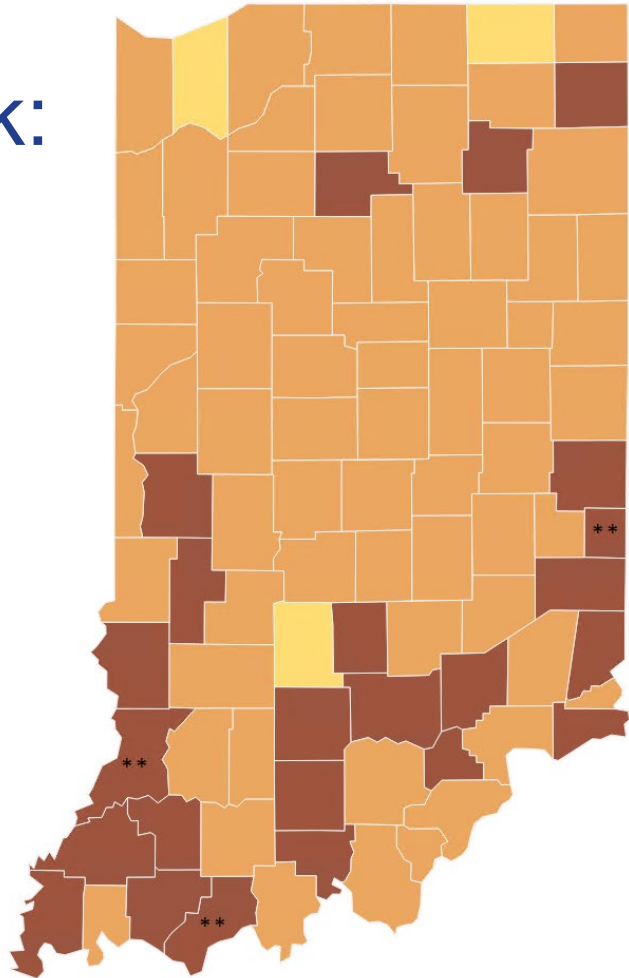
Indiana
Department
of
Health

Advisory Level

Last week:



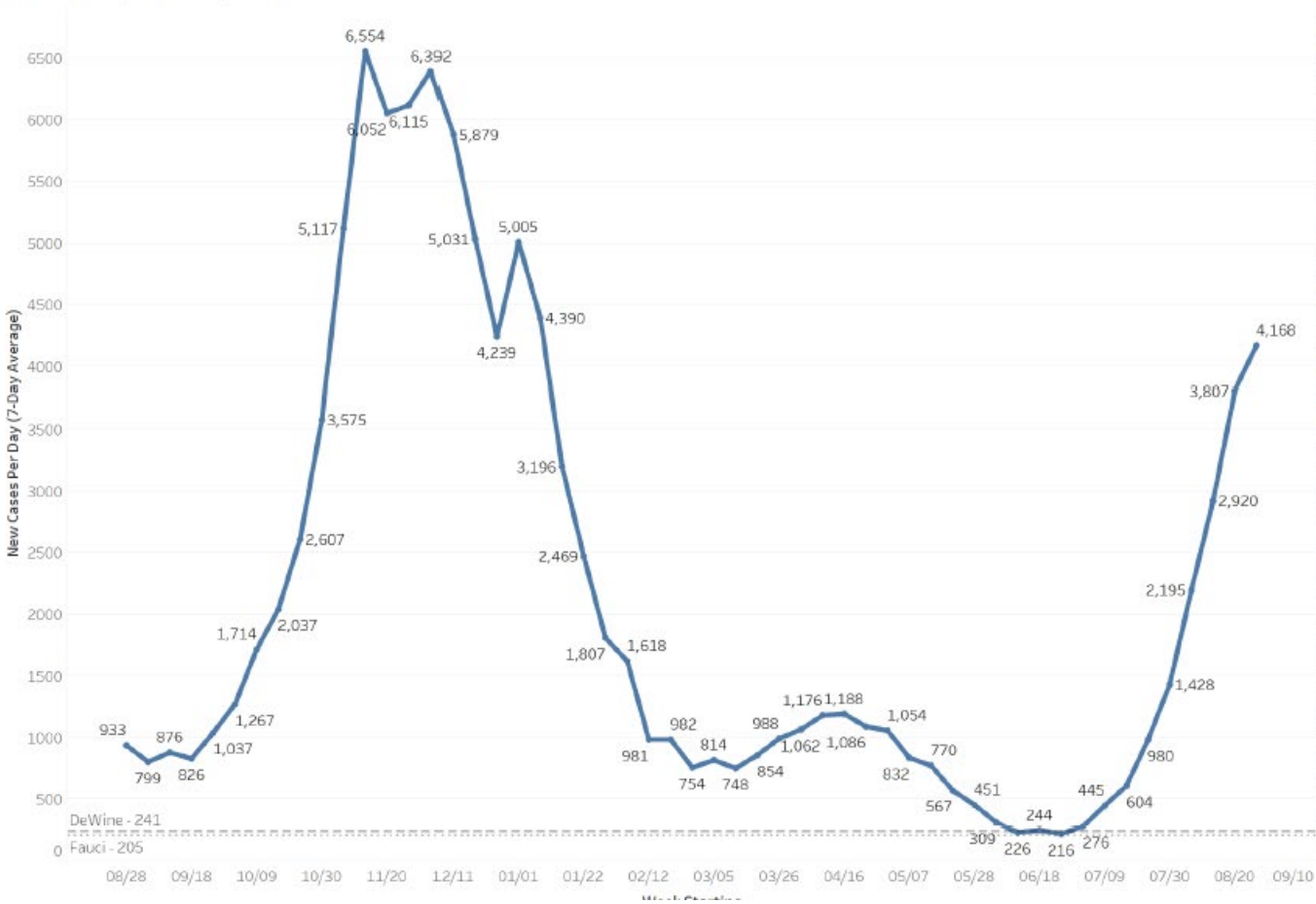
This week:



Positivity rate

Data
through
Sept. 2:
Indiana
averaged
4,168 new
cases last
week

New Cases (7-Day Average)
Data As Of September 02, 2021



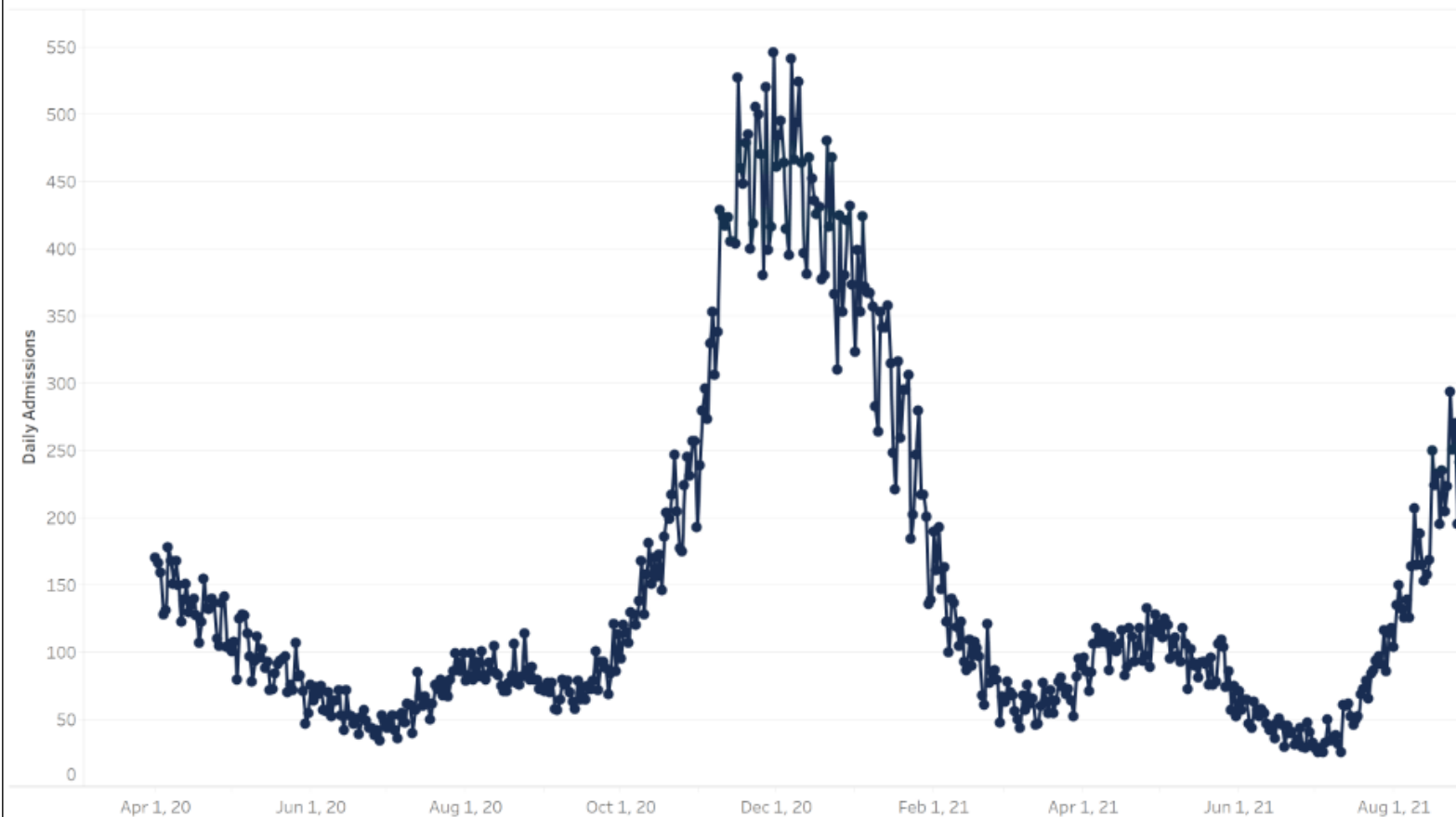
Week Starting	New Cases (7-Day Avg)
2020-08-29	933
2020-09-04	799
2020-09-11	876
2020-09-18	826
2020-09-25	1,037
2020-10-02	1,267
2020-10-09	1,714
2020-10-16	2,037
2020-10-23	2,607
2020-10-30	3,575
2020-11-06	5,117
2020-11-13	6,554
2020-11-20	6,052
2020-11-27	6,115
2020-12-04	6,392
2020-12-11	5,879
2020-12-18	5,031
2020-12-25	5,005
2021-01-01	4,239
2021-01-08	4,390
2021-01-15	3,196
2021-01-22	2,469
2021-01-29	1,807
2021-02-05	1,618
2021-02-12	981
2021-02-19	982
2021-02-26	814
2021-03-05	754
2021-03-12	748
2021-03-19	988
2021-03-26	1,062
2021-04-02	1,176
2021-04-09	1,188
2021-04-16	1,086
2021-04-23	1,054
2021-04-30	832
2021-05-07	770
2021-05-14	567
2021-05-21	451
2021-05-28	309
2021-06-04	226
2021-06-11	244
2021-06-18	216
2021-06-25	276
2021-07-02	445
2021-07-09	604
2021-07-16	980
2021-07-23	1,428
2021-07-30	2,195
2021-08-06	2,920
2021-08-13	3,807
2021-08-20	4,168
2021-08-27	4,168



Indiana
Department
of
Health

Hospital admissions

Number of Daily Inpatient Admissions for COVID-19 Positive Individuals
Data Last Updated on 9/7/2021, at 1:00 PM

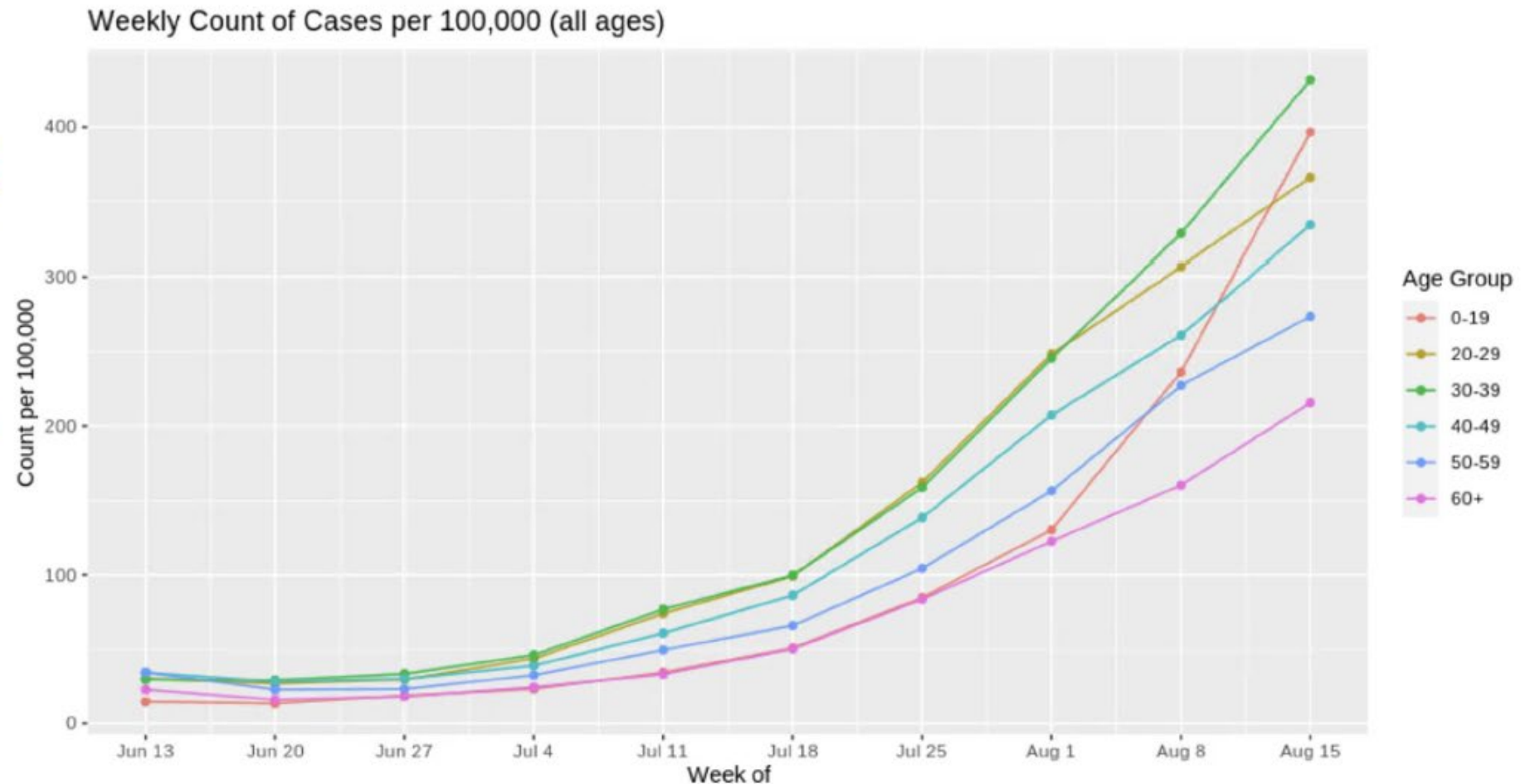


Indiana
Department
of
Health

Cases by age per 100,000

Cases in those **0-19** increasing at a faster rate than all other age groups.

Cases in the 0-19 age group make up the highest % of total cases than all other times during the pandemic.



Indiana
Department
of
Health

Cases by vaccination status

Since January 18, 93% of cases have been in those unvaccinated.

During the week of 8/15-8/21, about 18% of cases were in those who were vaccinated.

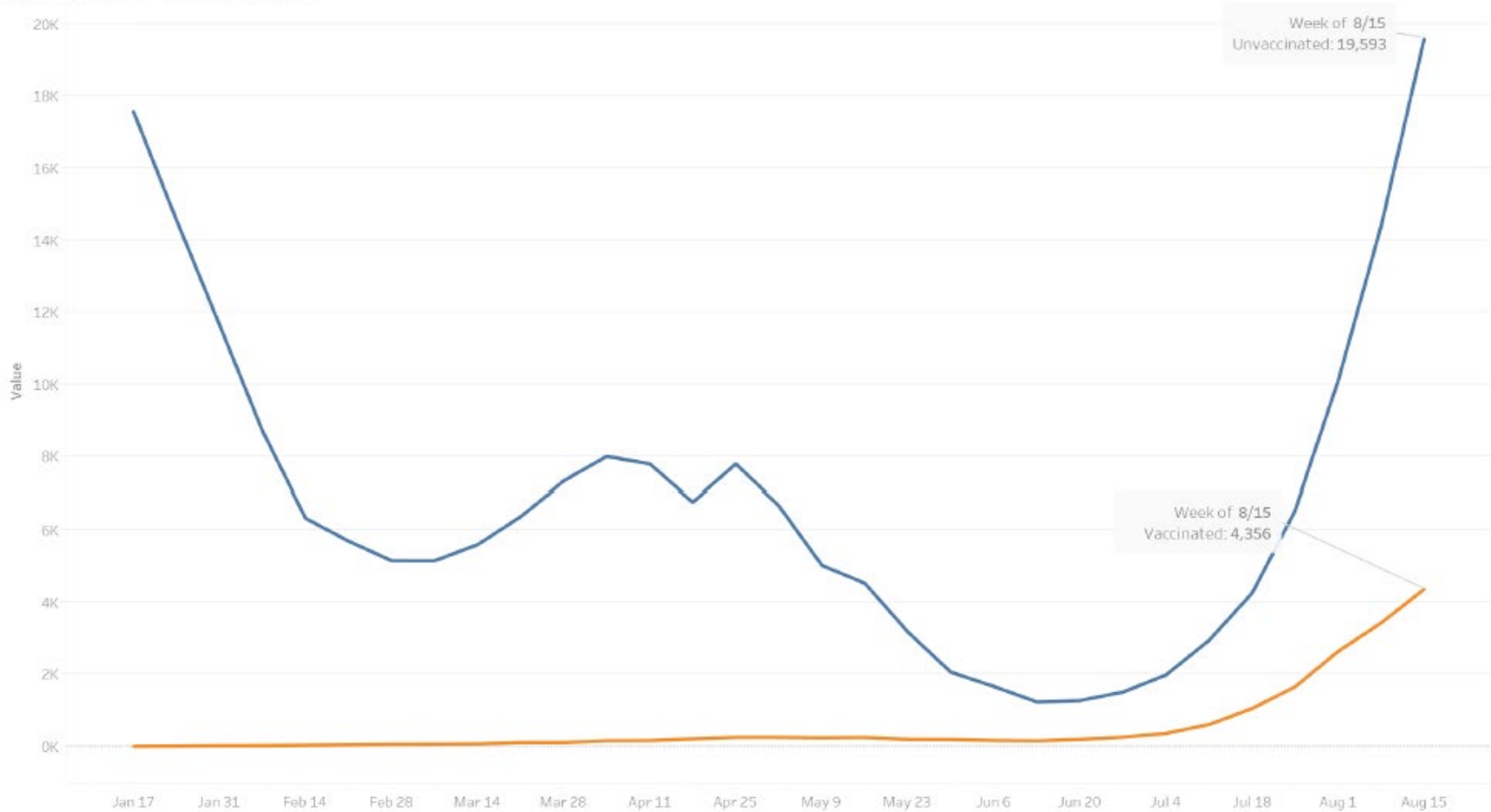
This is around the portion we would expect given Indiana's vaccination rate.

Vaccinated vs. Unvaccinated Cases by Week

Data Current as of 9/2/2021

Cases Vaccinated

Cases Unvaccinated



Indiana
Department
of
Health

COVID-19 in Indiana

For the week of Aug. 22 – 29



Indiana
Department
of
Health

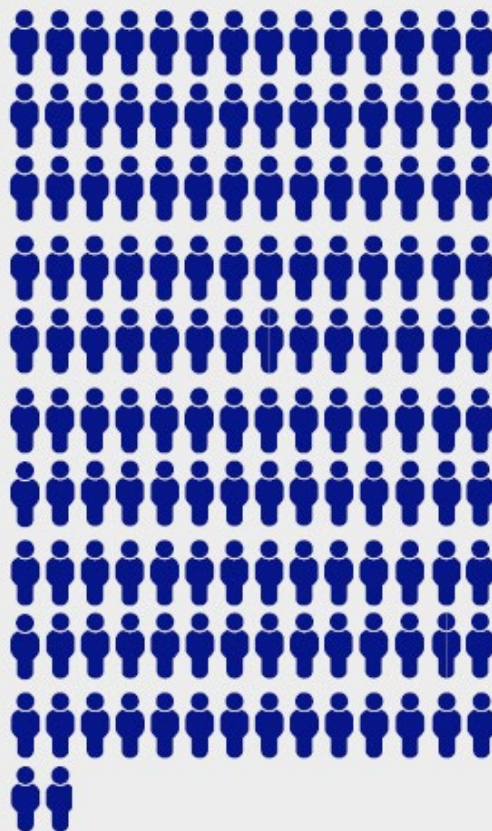
1,442

New COVID-19 admissions to hospital:

Fully
Vaccinated



NOT fully vaccinated



 = 10 Hoosiers

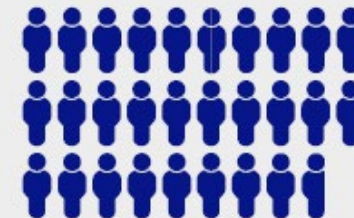
286

COVID-19 patients admitted to ICU:

Fully
Vaccinated



NOT fully vaccinated



144

COVID-19 deaths:

Fully
Vaccinated



NOT fully vaccinated



Indiana
Department
of
Health

Key Findings

- Last year's models included in-depth assumptions about school mask usage, social distancing in schools, school cohorts, and hybrid/virtual options
- **When utilizing those assumptions with current data, models for most districts could not produce the number of cases we are currently seeing in ages 0-19**
- Suggests policies last year were effective at reducing cases in school ages
- **Contact rates, how often individuals are interacting with each other, are at the highest levels since the beginning of the pandemic**

Riley Children's Health Respiratory Doc2Doc

Riley Children's Health is happy to serve as a resource for the Indiana pediatric medical community. Effective Sept. 1, 2021, we are offering 24/7 direct Doc2Doc support for care teams around the state who are treating patients with respiratory illnesses. This collaboration will allow children to receive care closer to home during this COVID-19 surge.

How to access:

Phone support

Call IMACS at 800.622.4989 and ask for the Riley Doc2Doc. Your call back number and patient information will be recorded, and you will receive a call from a Riley physician as soon as possible. Requests will be answered in the order in which they are received.

Virtual consult support

This platform is best suited for hospitals that have an inpatient pediatric floor. If accessed via an iPad or Android tablet, the platform allows for a face-to-face interaction between the providers at each site.

- If you are interested in virtual care support, please email virtualvisits@iuhealth.org for details.

We look forward to partnering to provide great care for children throughout our state during this COVID-19 surge.

EMS transport strike teams

- IDOH and Indiana Department of Homeland Security (IDHS) has contracted with Tri County Ambulance to deploy EMS Transport Strike Teams across Indiana for hospital transfers.
- Ten ALS equipped and paramedic staffed ambulances will be available 24/7 for a period of 30 days starting Sept. 3
- The primary effort of this EMS Strike Team deployment is to assist Indiana hospitals with surging patient census by providing additional EMS assets for inter-facility and hospital transfers when traditional EMS assets are depleted.
- While the ambulances will be initially stationed in each of the southern, central, and northern regions of the State, they will be strategically re-deployed to best respond to hospital needs. **It is imperative that hospitals continue to utilize and exhaust their preferred EMS providers and traditional EMS transport relationships before requesting the use of the State Transport Strike Teams.**
- These Strike Teams will serve as a backup for those local EMS assets when no other options are available, all other resources have been exhausted, or wait times excessively exceed a patient's needs. To utilize this support service and request one of these Transport Strike Teams, hospitals should first contact their local and customary EMS provider agencies. If they are unavailable to respond to your facility, then the following procedure can be used to request an EMS Transport Strike Team response.

EMS transport strike teams

- EMS Transport Strike Teams can be requested by calling the dispatch center at 888-606-5050.
- **You must state that you are requesting an EMS "Transport Strike team" to complete an interfacility or other patient transfer.**
- Note that calls will be triaged based on patient acuity, distance, and availability of ambulances.
- Please provide the following information:
 1. Patient's name
 2. Diagnosis/Transport request reason
 3. Level of care (ALS, BLS)
 4. Location of the sending facility
 5. Destination (receiving facility), accepting physician, and destination location (ER, ICU, etc.)
 6. Special equipment or other patient needs
 7. Call back phone number and phone number of receiving unit
 8. Other information as requested by dispatch

Testing and Vaccination Strike Teams

Noon to 8 p.m. Friday and Saturday

Jasper
Pulaski
Cass

Shelby
Wayne
Putnam

Jackson
Franklin
Pike

Noon to 8 p.m. Monday to Wednesday

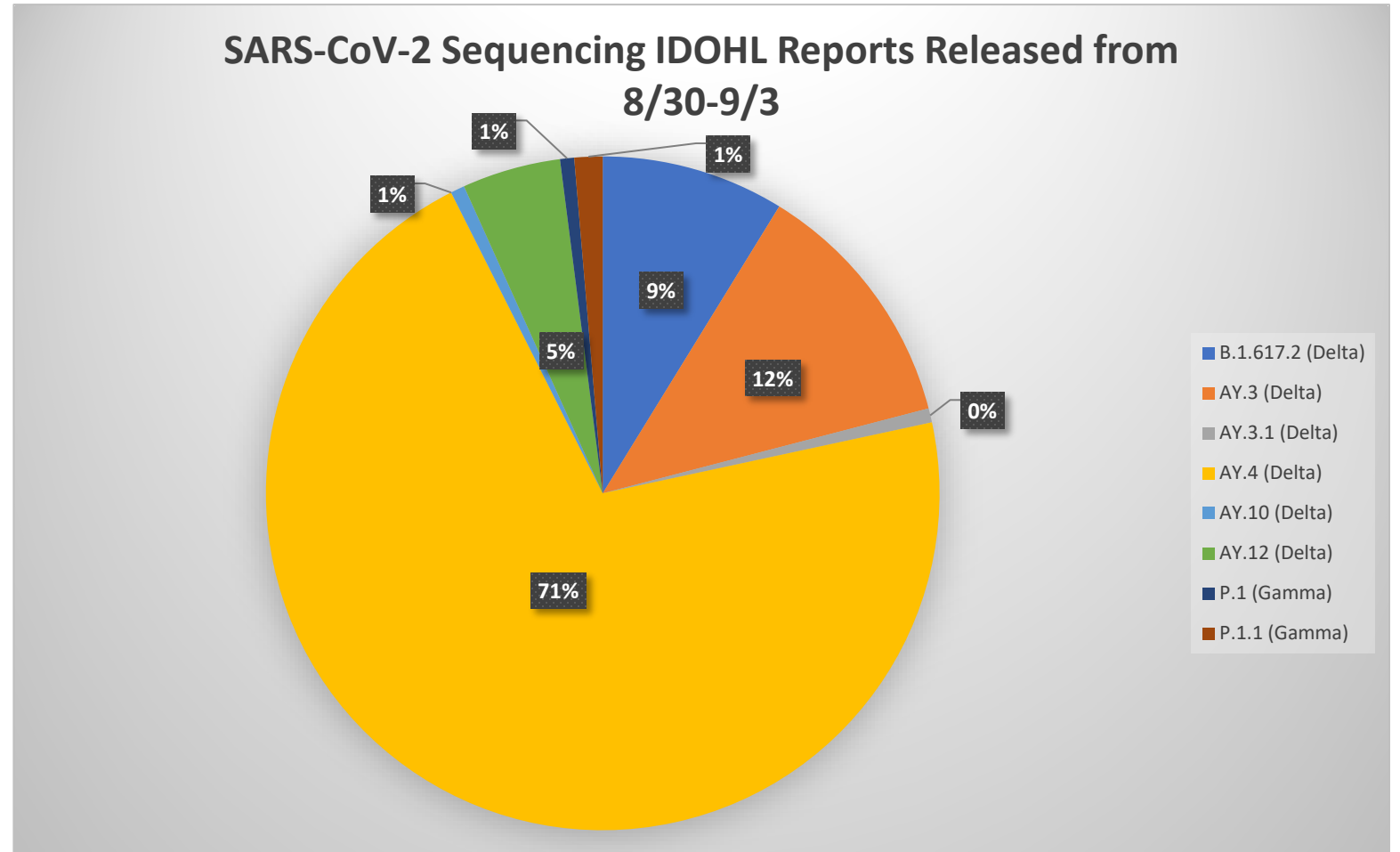
La Porte
St Joe
Wells

Cass
Hendricks or Hancock
Wayne

Vigo
Bartholomew
Ripley
Martin

IDOHL SARS-CoV-2 Sequencing Summary

SARS-CoV-2 Sequencing IDOHL Reports Released from 8/30-9/3	
External Lab	Reports Released
B.1.617.2 (Delta)	13
AY.3 (Delta)	18
AY.3.1 (Delta)	1
AY.4 (Delta)	105
AY.10 (Delta)	1
AY.12 (Delta)	7
P.1 (Gamma)	1
P.1.1 (Gamma)	2
Grand Total	148



Mu variant

- First surfaced in Colombia earlier this year now classified as Variant of Interest by the WHO
- Very low prevalence, in U.S. less than 0.1% of Mu variant
- In 49 states, but declining in almost all regions
- 8 cases sequenced in Indiana
- Discussing if it will become variant of interest

BinaxNOW tests

- Use them to allow return on Day 8
- Can also use them throughout the 14 days of quarantine
- Please use the [Langham portal](#) for ordering any needed personal protection equipment (PPE), including KN95 masks, face masks for children and adults, hand sanitizer and small quantities of PPE needed for testing personnel (face shields, disposable gowns, gloves).
- If you are a first-time user, you will need to click “Register” and fill out the required information to be granted access. The registration key is ISDH21
- Email your questions and completed testing information to:
binaxnowtestsupport@isdh.in.gov

Booster doses

- Plan is for individuals to be eligible starting 8 months after they received their second dose of an mRNA vaccine (either Pfizer-BioNTech or Moderna)
- ACIP to meet Sept. 17 to review August data
- Waiting on data evaluation to determine if 6- or 8-month framework
- Starting Sept. 20 is still planning assumption



Contact Tracing and Other News

Leah Raider



Indiana
Department
of
Health

ICCTP Close Contact Letter Updates

K-12 close contact letter in MS Dynamics is updated per guidance from last week.

- Available in both English and Spanish.

Still encourages close contacts exposed in the school to reach out to the school for specific guidance

- Schools are varied and still evolving their approach
- ICCTP still available to clarify how to apply options if a parent calls with questions.
 - Dial 833-670-0067
 - 7 days a week, 8 a.m.-8 p.m. EST

K-12 Case and Close Contact Reporting Portal

- K-12 Case and Close Contact Reporting Portal Link:
<https://gateway.isdh.in.gov/Gateway/SignIn.aspx>
- Issues with the K-12 Case and Close Contact Reporting Portal, including adding a new user? Please submit a helpdesk ticket here: <https://eportal.isdh.in.gov/SchoolAppCustomer/>
- REMEMBER: Contact tracing is most effective when done within 48 hours of exposure.

Questions? We have answers.

Schools can reach out to Back2School:

- Dial 800-745-7487
 - 7 days a week, 8 a.m. – 8 p.m. EST
- Email backtoschool@isdh.in.gov

General public encouraged to engage with their school or call the state contact tracing team:

- Dial 833-670-0067
 - 7 days a week, 8 a.m. – 8 p.m. EST

Everyone can access the online isolation & quarantine calculator:

- <https://www.coronavirus.in.gov/2400.htm>
- In process of getting updated per the latest K-12 guidance

Community testing support

- IDOH is partnering with a third party to meet the urgent need for local testing sites throughout the state
- Will launch within a week, and we hope to have more details to share in the next day or two
- Will be flexible to address emerging need
- These are not pop-up sites, mobile units and strike teams will continue to fill urgent needs

Additional School Resources

- <https://www.coronavirus.in.gov/2400.htm> is the Public Resources link
- Back-to-School Resources are the first tab under public resources
- We are updating our resources as quickly as we can. Most resources are readily available there. If you have questions you cannot find the answer to on the website...
 - Email me at backtoschool@isdh.in.gov if you are a school nurse, principal or superintendent, other administrator, or LHD and you have questions. Please reserve the back-to-school email for this critical group of individuals
 - If you have a parent or other individual who needs to ask a question or speak to someone, please provide them the BackToSchool phone line (800-745-7487) or refer them to 211.
 - For vaccine/testing questions call 211
- School Help Desk - <https://eportal.isdh.in.gov/SchoolAppCustomer/>
 - Use to submit a help desk ticket if you are having trouble
 - If you need to add a user / remove a user from the Gateway portal