

# THE HOMAN HUB



## IN THIS ISSUE

New Staff

Playground  
Protocols

College GO! Week

Kindergarten Lens

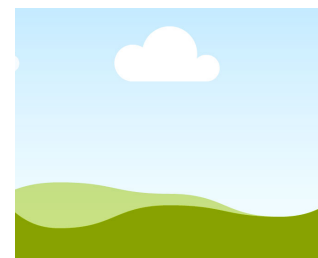
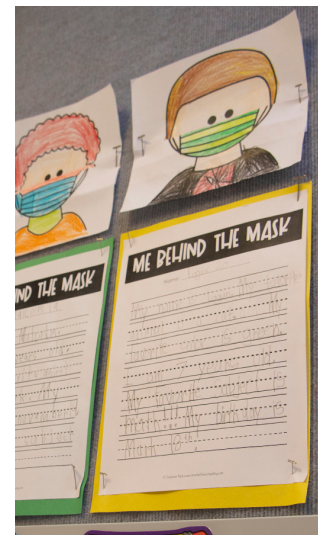
## PLAYGROUND PROTOCOLS

### NEW PAVEMENT + EQUIPMENT

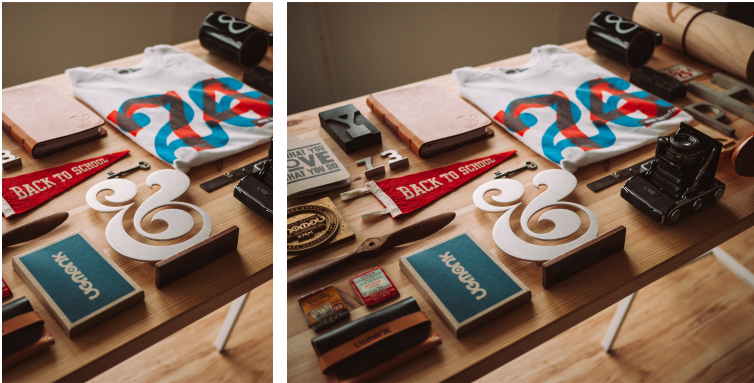
As the new school year kicks off, it's important to recognize the many changes ahead

periodically to the members of a society, business, or organization." A newsletter may be considered "grey literature". Newsletters delivered electronically via email (e-newsletters) have gained rapid acceptance for the same reasons email in general has gained popularity over printed correspondence.

Some newsletters are created as money-making ventures and sold directly to subscribers. Sending newsletters to customers and prospects is a common marketing strategy, which can have benefits and drawbacks. Public organizations emit newsletters in order to improve or maintain their reputation in the society. General attributes of newsletters include news.



SEPTEMBER 21-25

[illegible]

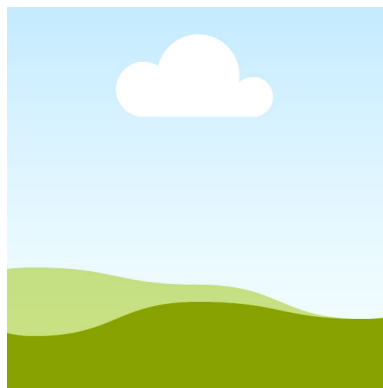
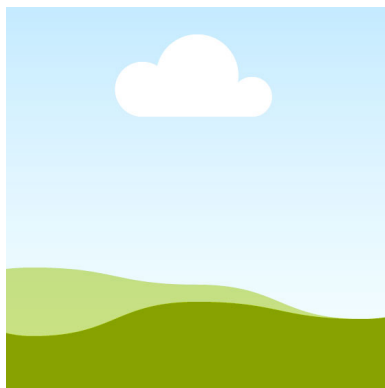
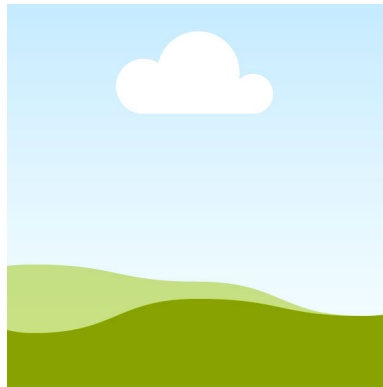
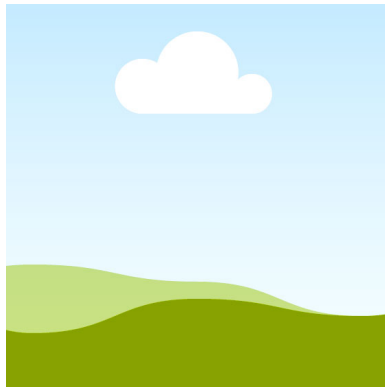
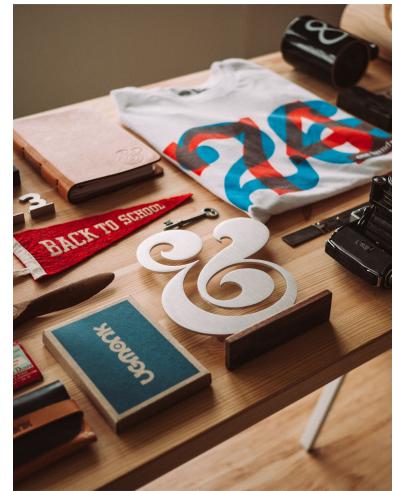
CHANGE THIS!!!!!!!

A close-up photograph of a white ceramic bowl filled with fresh, vibrant red raspberries. The bowl is resting on a light-colored wooden surface. The raspberries are plump and have a characteristic bumpy texture. The lighting is bright, highlighting the rich red color of the fruit.

specific age range varies, as youth is not defined chronologically as a stage that can be tied to specific age ranges; nor can its end point be linked to specific activities, such as taking unpaid work or having sexual relations without consent. Youth is an experience that may shape an individual's level of dependency.



BY SAMANTHA ANDREWS

[illegible]

SEPTEMBER 21-25

Employment is a relationship between two parties, usually based on a contract where work is paid for, where one party, which may be a corporation, for profit, not-for profit organization, co-operative or other entity is the employer and the other is the employee. Employees work in return for payment, which may be in the form of an hourly wage, by piecework or an annual salary, depending on the type of work an employee does and/or which sector she or he is working in. Employees in some fields or sectors may receive gratuities, bonus payments or stock options. In some types of employment, employees may have benefits.

## MEET THE INTERN!

### ALAYNA WILKENING

Hey everyone! My name is Alayna Wilkening, and I am Homan's Public Relations Intern for the 2020-2021 school year. I'm so excited to have this opportunity and I've loved every second of it so far! I am currently a junior at Lake Central and a design editor for the publications staff. I plan on majoring in graphic design and minoring in photojournalism in college. I have always loved using design and graphics to communicate, and I hope this newsletter will be effective in keeping you informed about what's been happening with your child while they are in school. Now more than ever, teachers and staff are working hard to make your child's school experience memorable, and I hope you can see all of their hard work paying off. **If you need to contact me for any reason, feel free to reach out! You can email me at either [agwilkening@lcstudents.com](mailto:agwilkening@lcstudents.com) or [lalalaney2@gmail.com](mailto:lalalaney2@gmail.com)**

